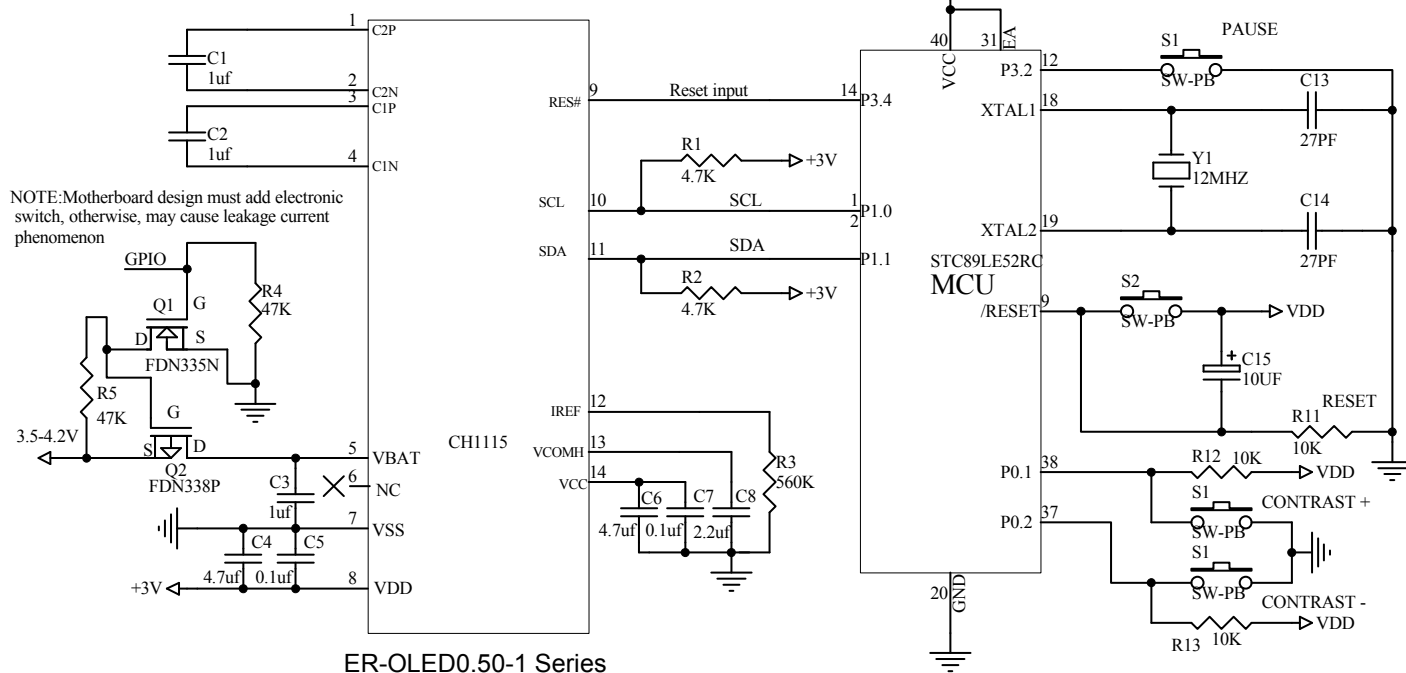


# Interfacing MCU STC89LE52RC to ER-OLED0.50-1

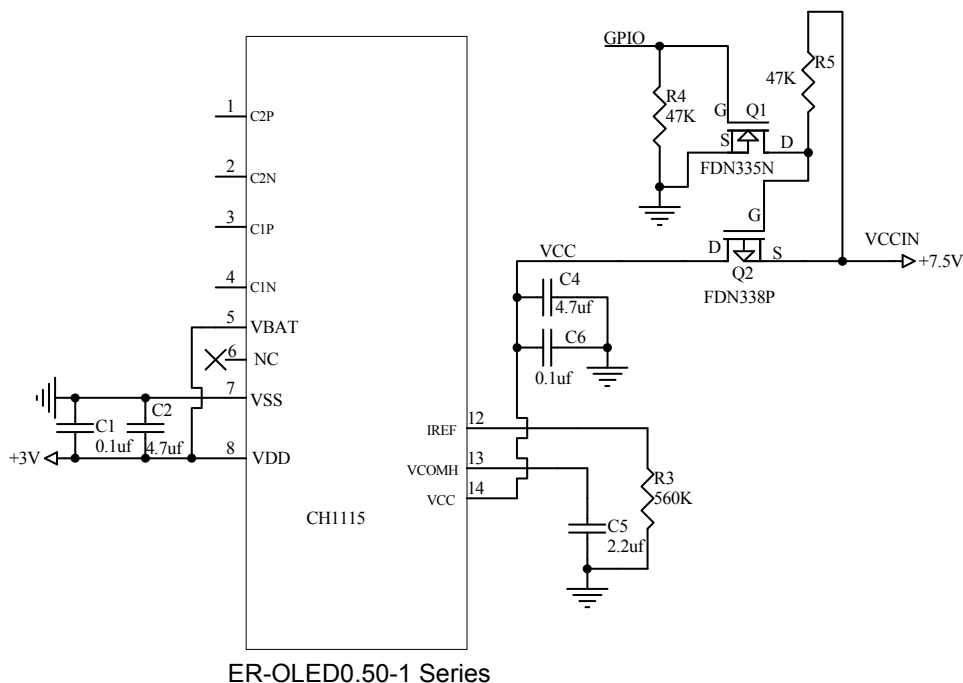
## The Serial I2C Reference Example

Used internal Charge Pump



VCC Supplied Externally(Don't use internal Charge Pump)

NOTE: Motherboard design must add electronic switch, otherwise, may cause leakage current



Title **EASTRISING TECHNOLOGY CO.,LTD.**

Size **A** Number **ER-OLED0.50-1 Series** Revision **A0**

Date: **02-Apr-2020**

Sheet of **1**

File **Drawn By Javen**