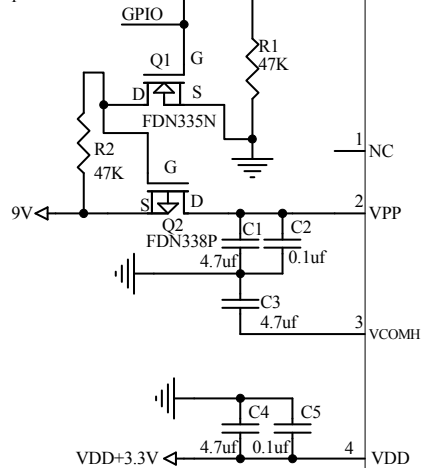


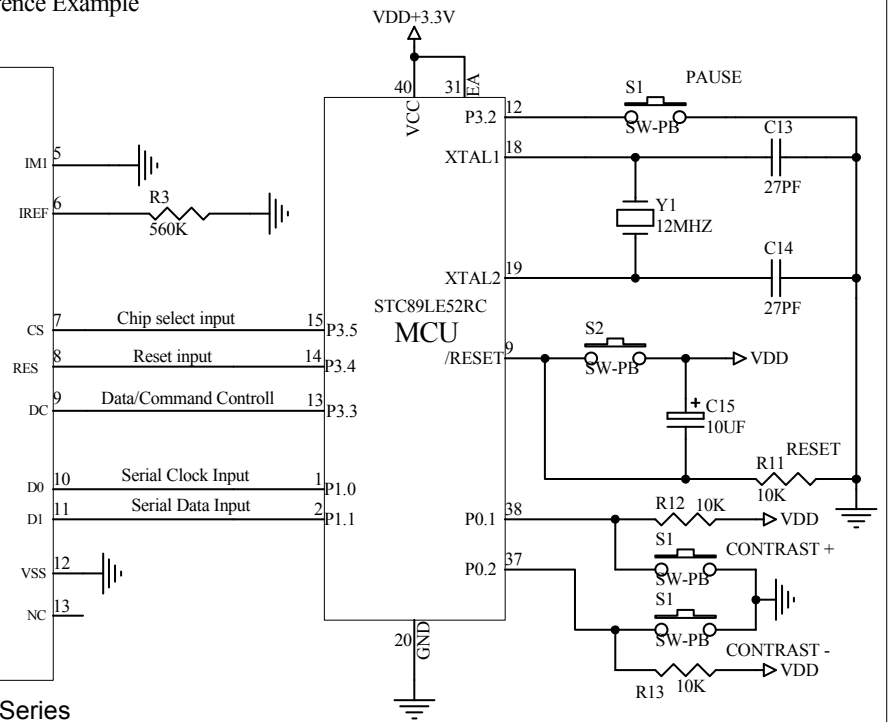
Interfacing MCU STC89LE52RC to ER-OLED0.78-1

The Serial (4line SPI)Reference Example

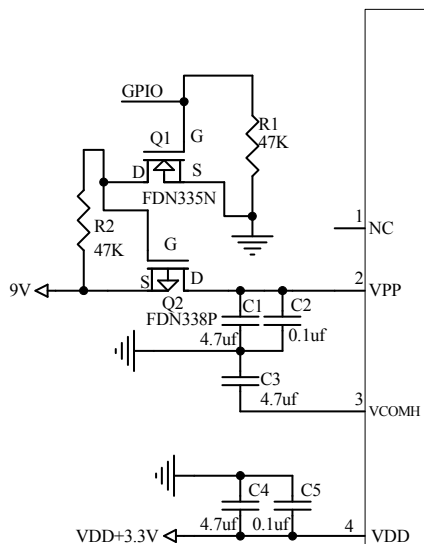
NOTE:Motherboard design must add electronic switch, otherwise, may cause leakage current phenomenon



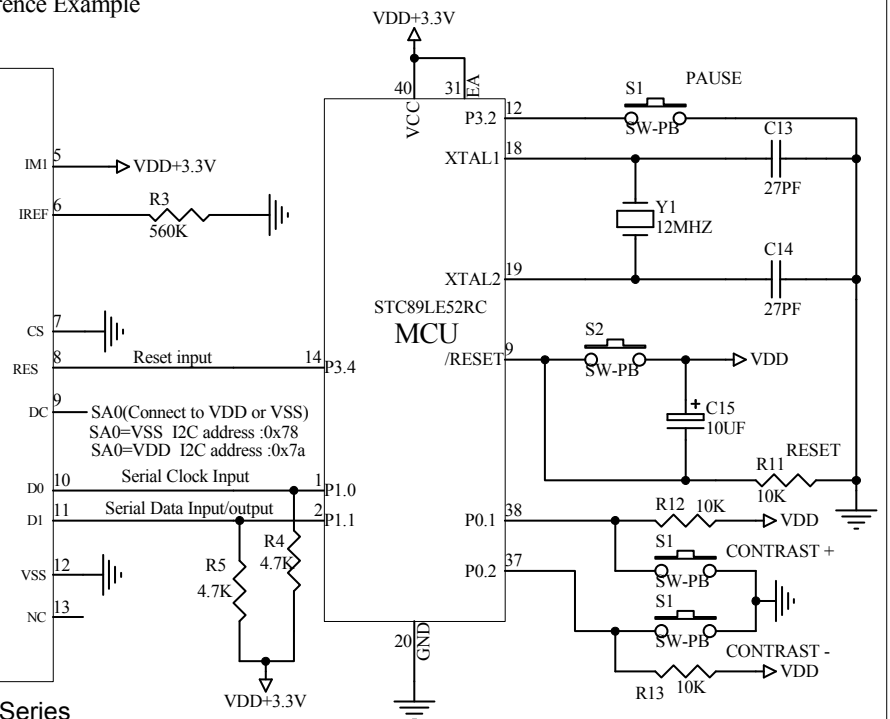
ER-OLED0.78-1 Series



The Serial (2line I2C)Reference Example



ER-OLED0.78-1 Series



Title **EASTRISING TECHNOLOGY CO.,LTD.**

Size **A** Number **ER-OLED0.78-1 Series** Revision **A0**

Date: **Apr-02-2020** Sheet of **1**
File **Drawn By Javen**