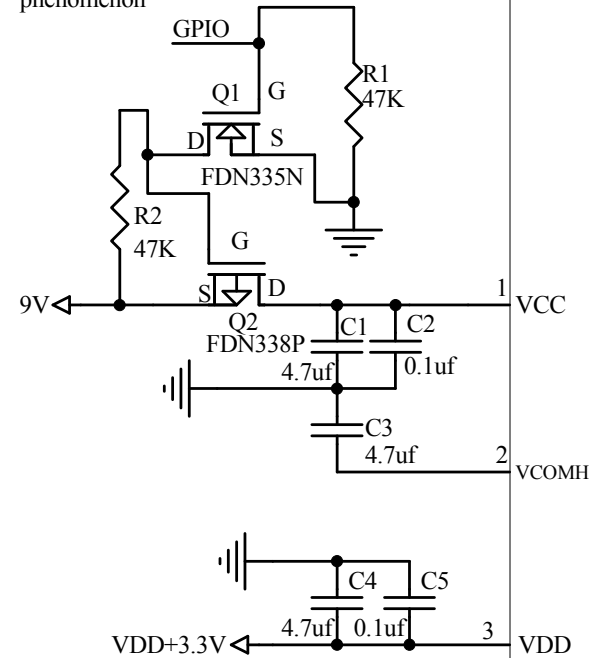


Interfacing MCU STC89LE52RC to ER-OLED0.96-6

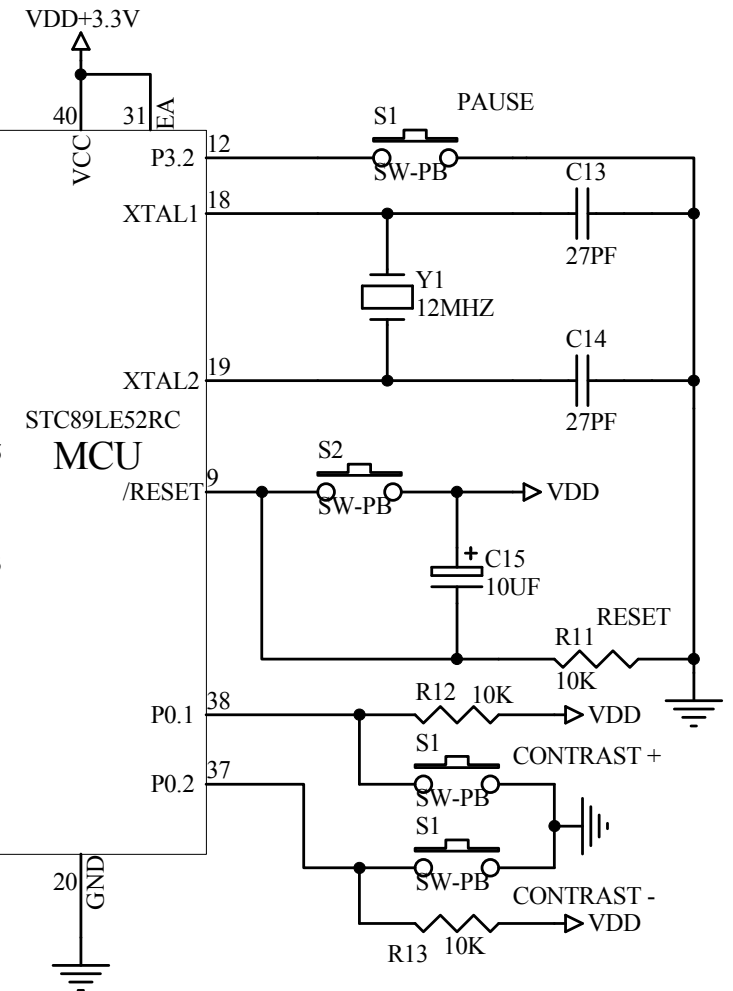
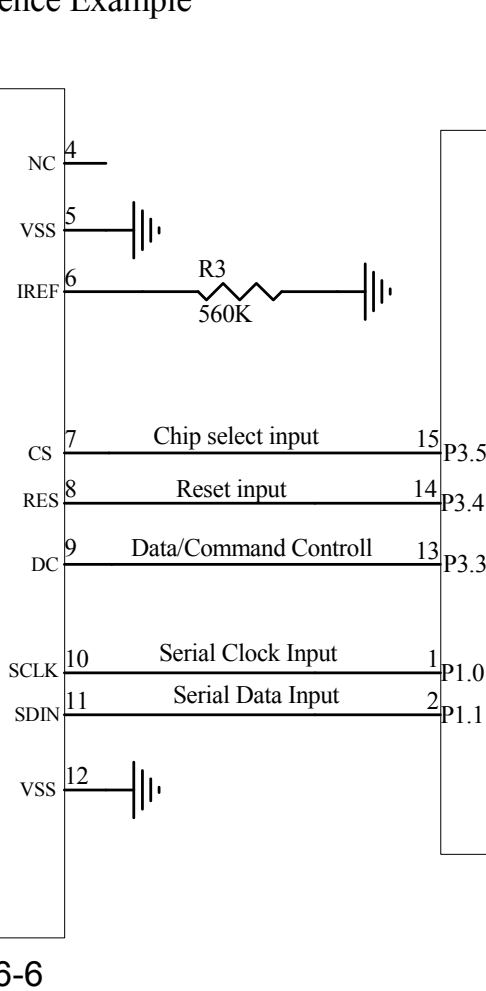
The Serial (4line SPI)Reference Example

NOTE:Motherboard design must add electronic switch, otherwise, may cause leakage current phenomenon



SSD1317

ER-OLED0.96-6



Title **EASTRISING TECHNOLOGY CO.,LTD.**

Size **A** Number **ER-OLED0.96-6 Series** Revision **A0**

Date: **May-26-2020** Sheet of **1**
File **Drawn By Javen**