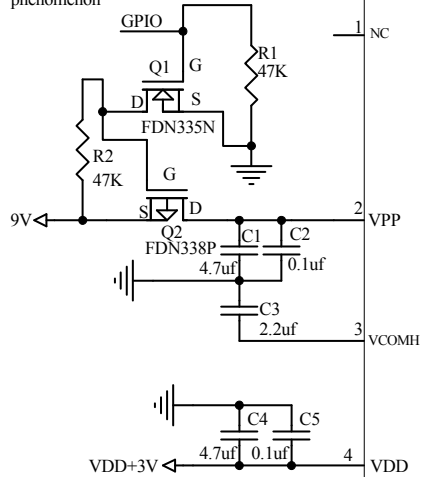
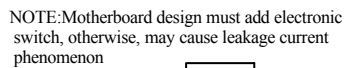


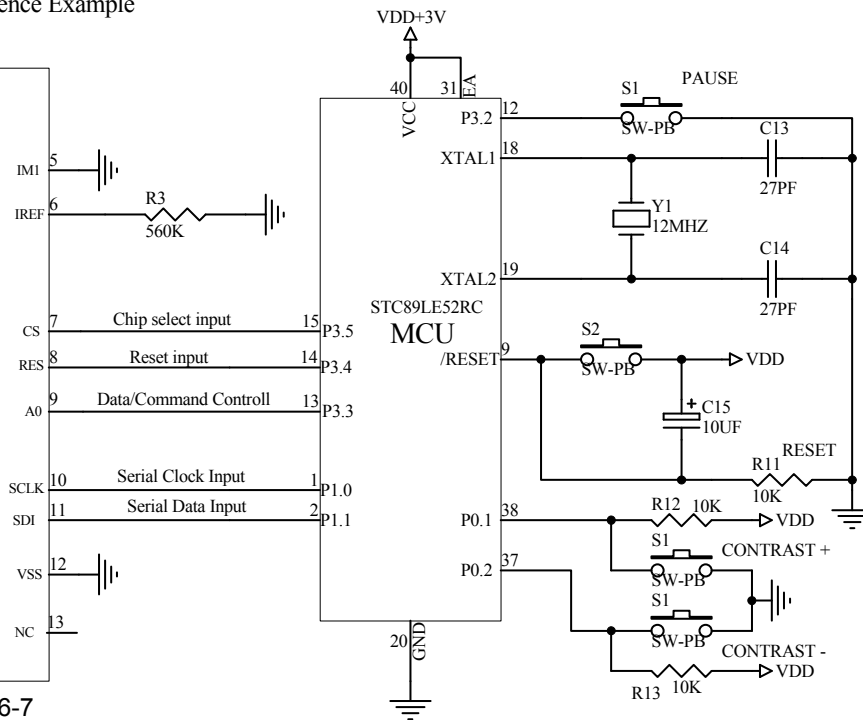
1	2	3	4	5
---	---	---	---	---

## The Serial (4line SPI)Reference Example

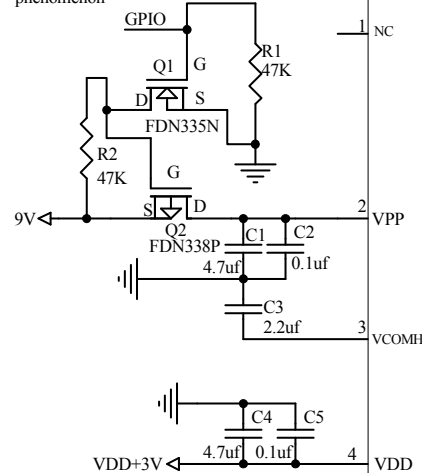
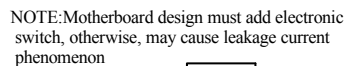


SH1107

ER-OLED0.96-7

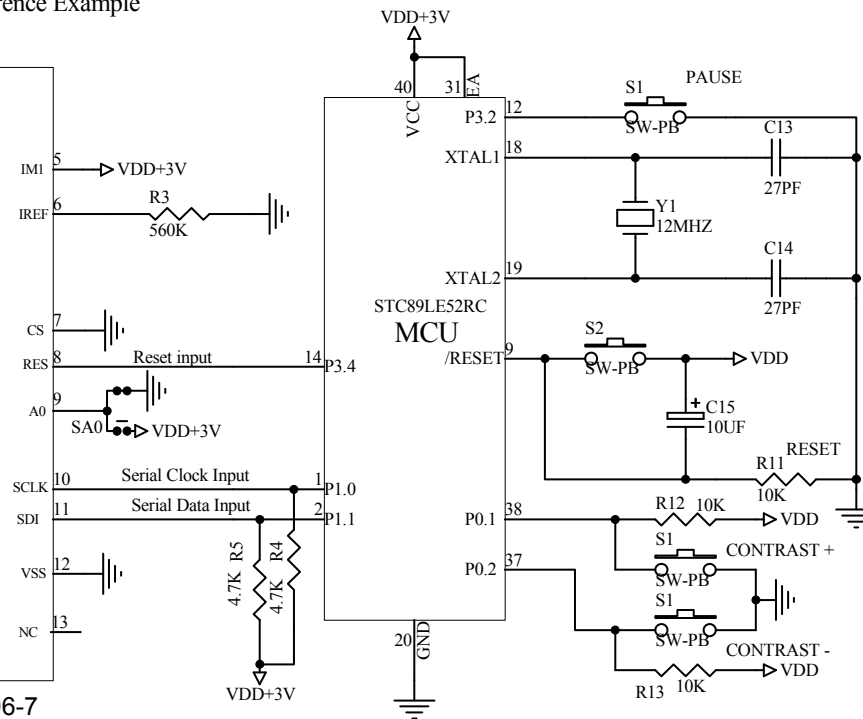


## The Serial (2line I2C)Reference Example



SH1107

ER-OLED0.96-7



PIN 9(A0) acts as SA0 for slave address selection.  
If SA0 conneted to H: Slave address :0x7a  
If SA0 conneted to L: Slave address :0x78

Title			<b>EASTRISING TECHNOLOGY CO.,LTD.</b>		
Size	Number	Revision			
A	ER-OLED0.96-7 Series	A0			
Date:	Nov-24-2020	Sheet of		1	
File		Drawn By		Javen	