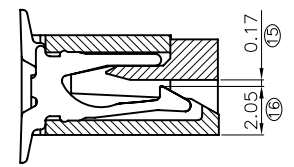
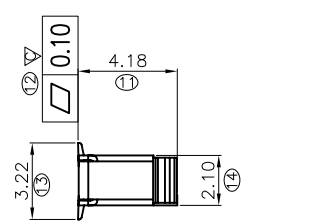
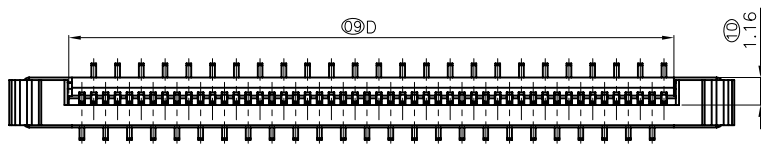
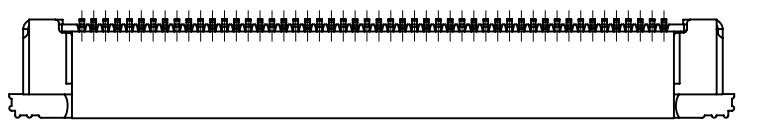
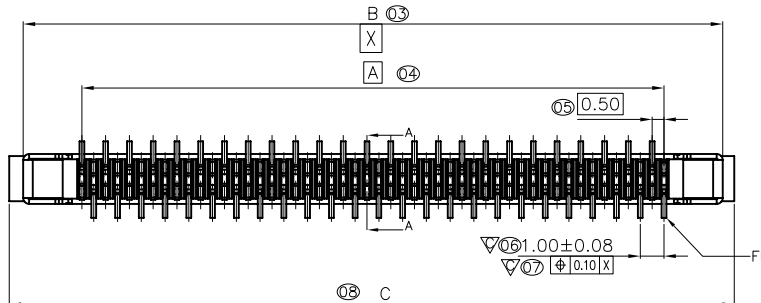
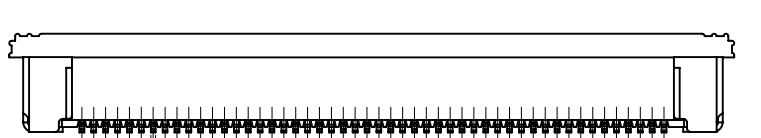


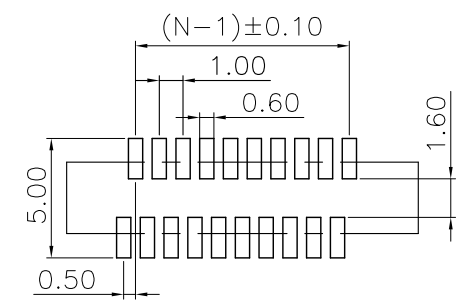
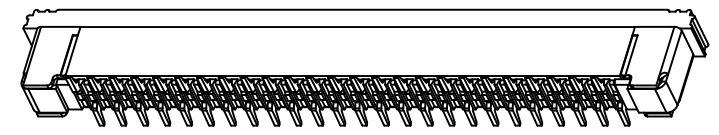
16 PINS 0.50Pitch SMD Vertical Type Positive Contact

REV.	ECN NO.	LOCATIONS	DESCRIPTION	DATE	DESIGN
A0			Preliminary Release	Dec-8-2012	Tony

Pin Num	A	B	C	D
16	7.50	12.50	13.52	8.60



SECTION:A-A
SCALE: 2:1



PCB Foot Print
TOLERANCE:±0.05

- Material:**
- 1、Housing: NYlon46 UL94V-0 Grey;
 - 2、Loeker: PPS UL94V-0;
 - 3、Contact:Phosphor bronze,tin/lead-plated;
 - 4、Solder tab:Phosphor bronze,tin/lead-plated.

- Specification:**
- 1、Unverified Tolerance should comply with SJ1372-79;
 - 2、Temperature Range: -25°C~85°C;
 - 3、Rated Voltage: 50V, AC, DC;
 - 4、Contact Resistance: ≤0.03 Ω;
 - 5、Insulation Resistance: ≥500M Ω;
 - 6、Withstand Voltage: 500V, AC/minute.

旭日东方科技有限公司 EastRising Technology Co.,Ltd. TEL: +86-755-33503873 FAX: +86-755-33507642-801	CD
	UNIT: MM SIZE: A4 SHEET: 1 OF 1
Part Number for Order: ER-CON16VP - 1	
DRAWN BY : Jim	CHECKED BY: Tony APPROVED BY : Liu