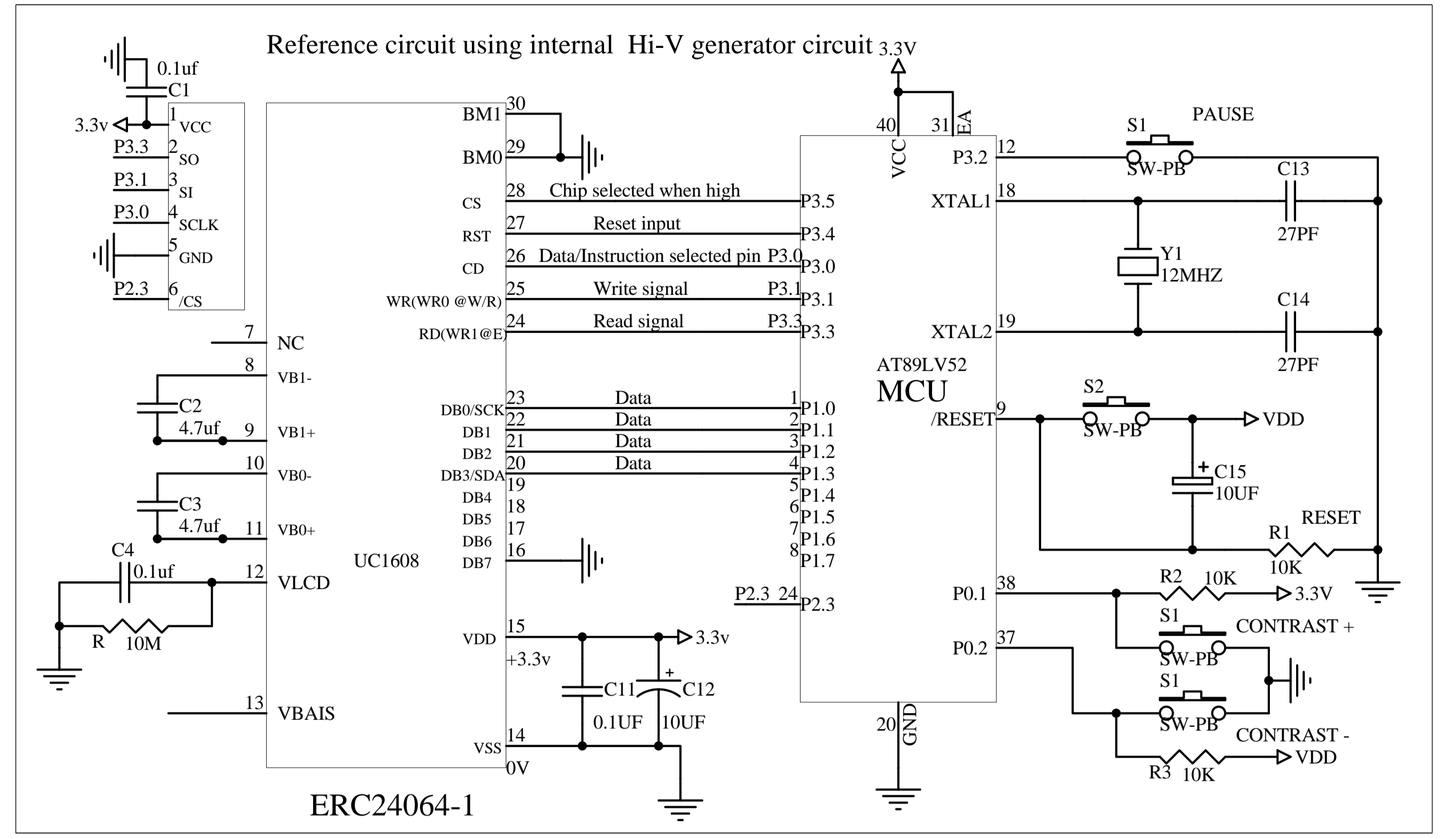
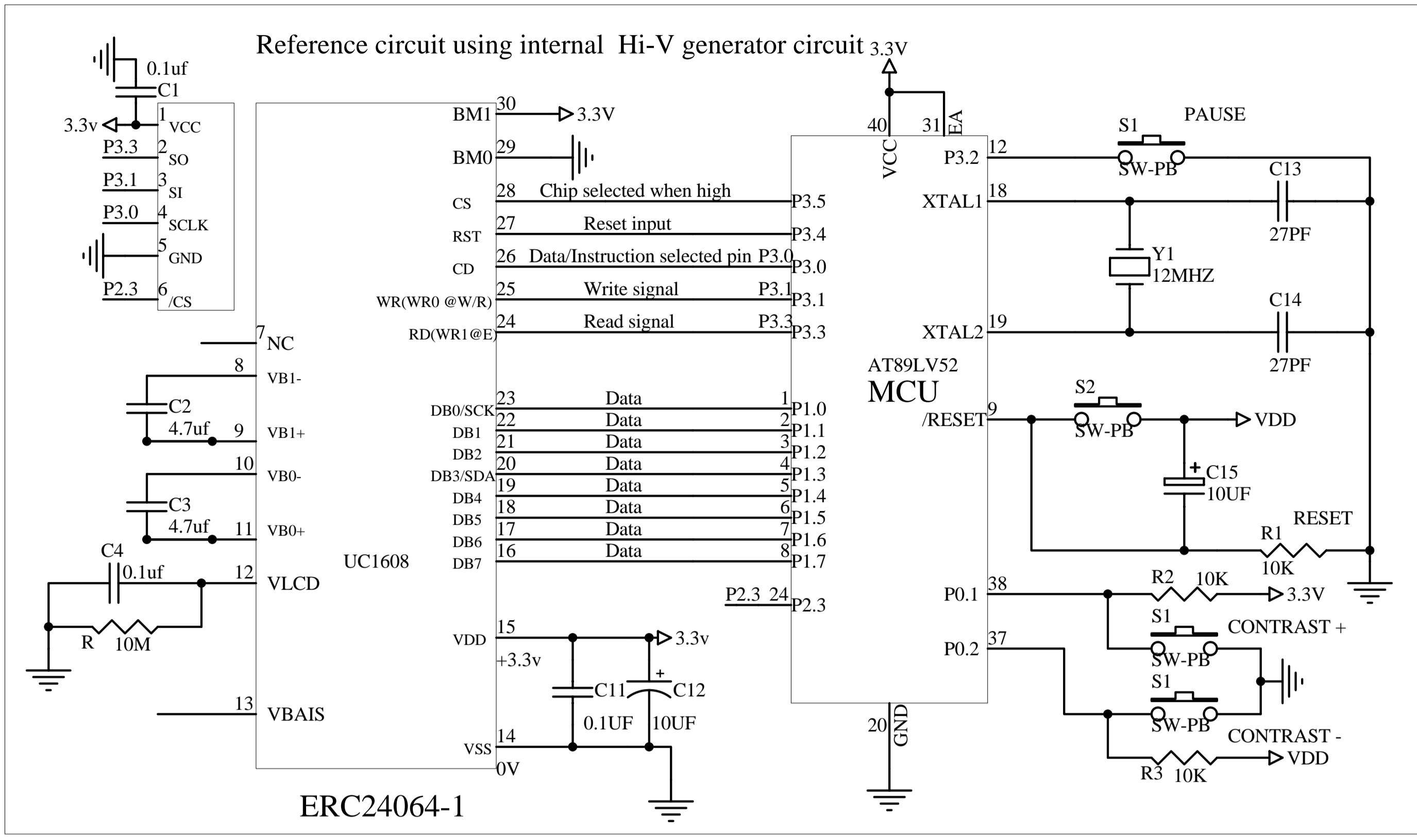


Interfacing LCD Modules to the AT89LV52 MCU

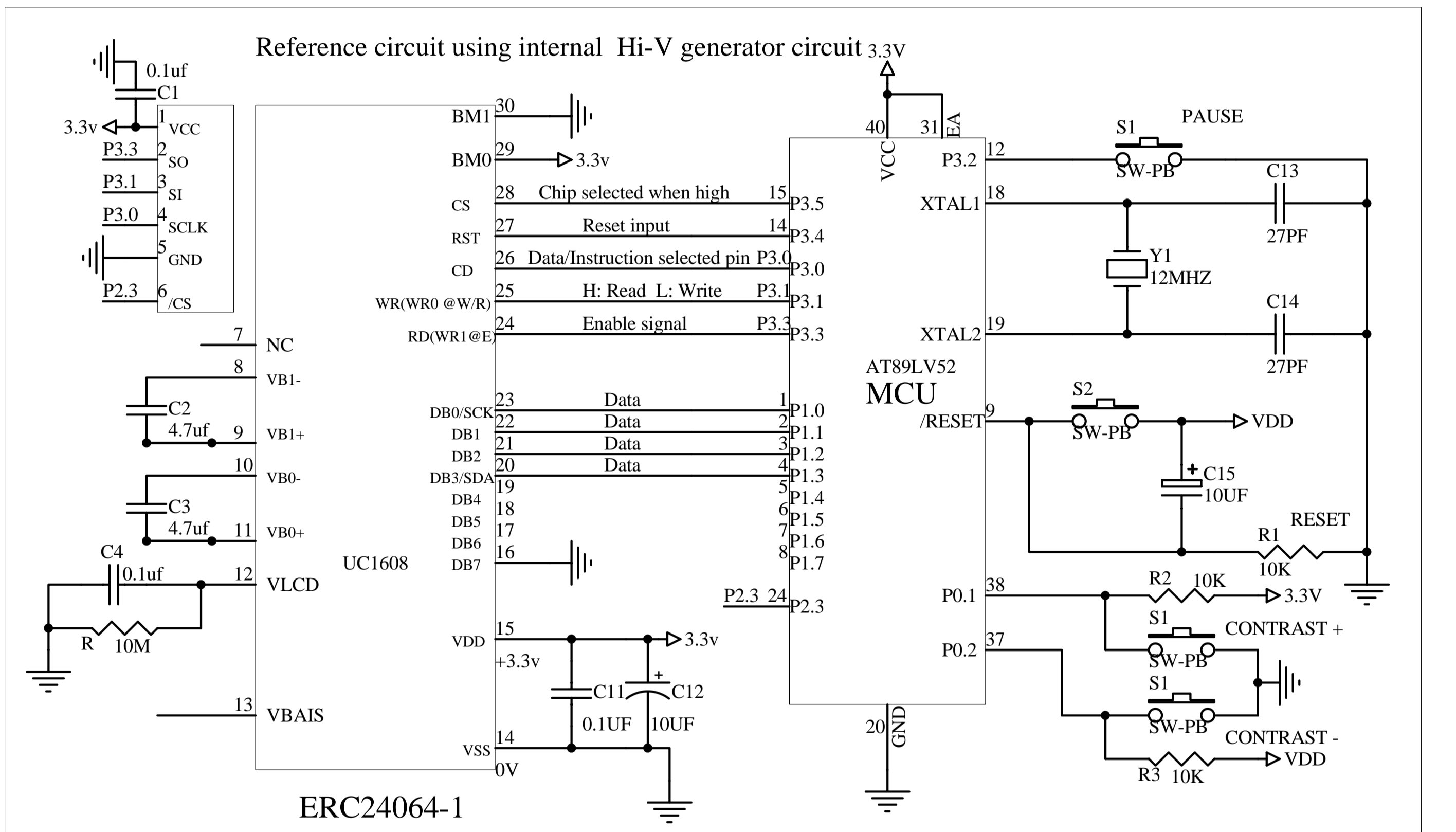
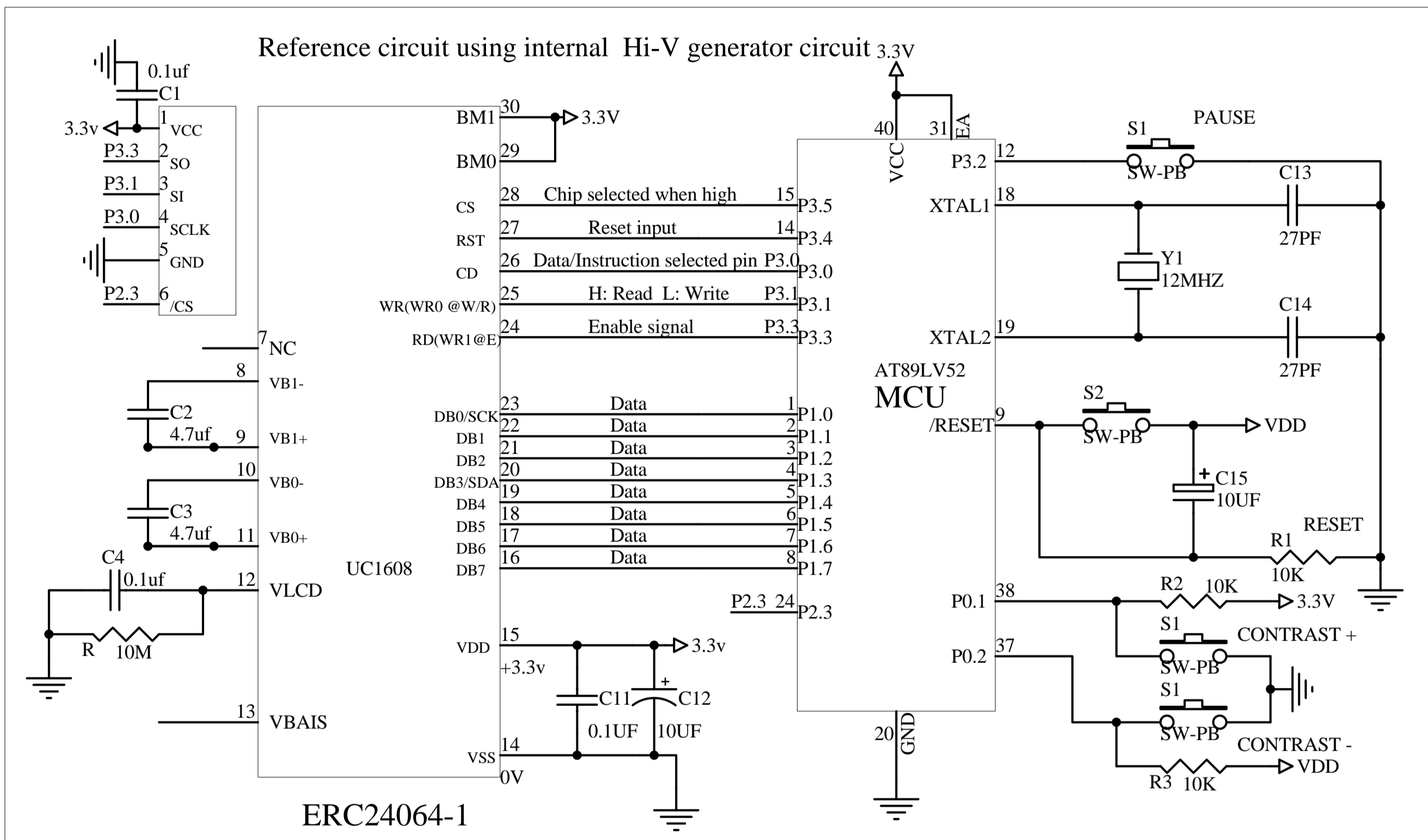
The Parallel (8080 8bit Series MCU)Reference Example

The Parallel (8080 4bit Series MCU)Reference Example



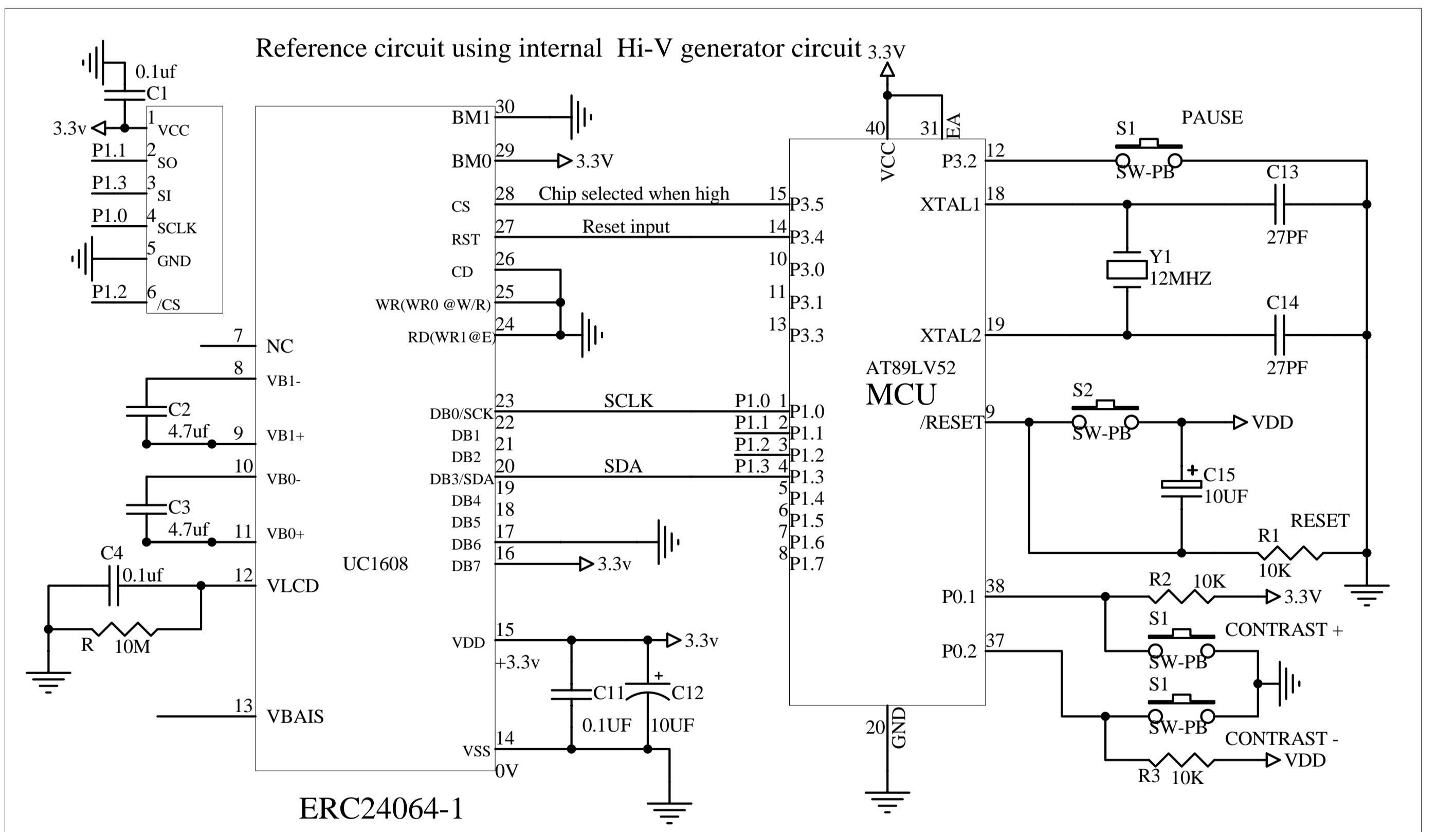
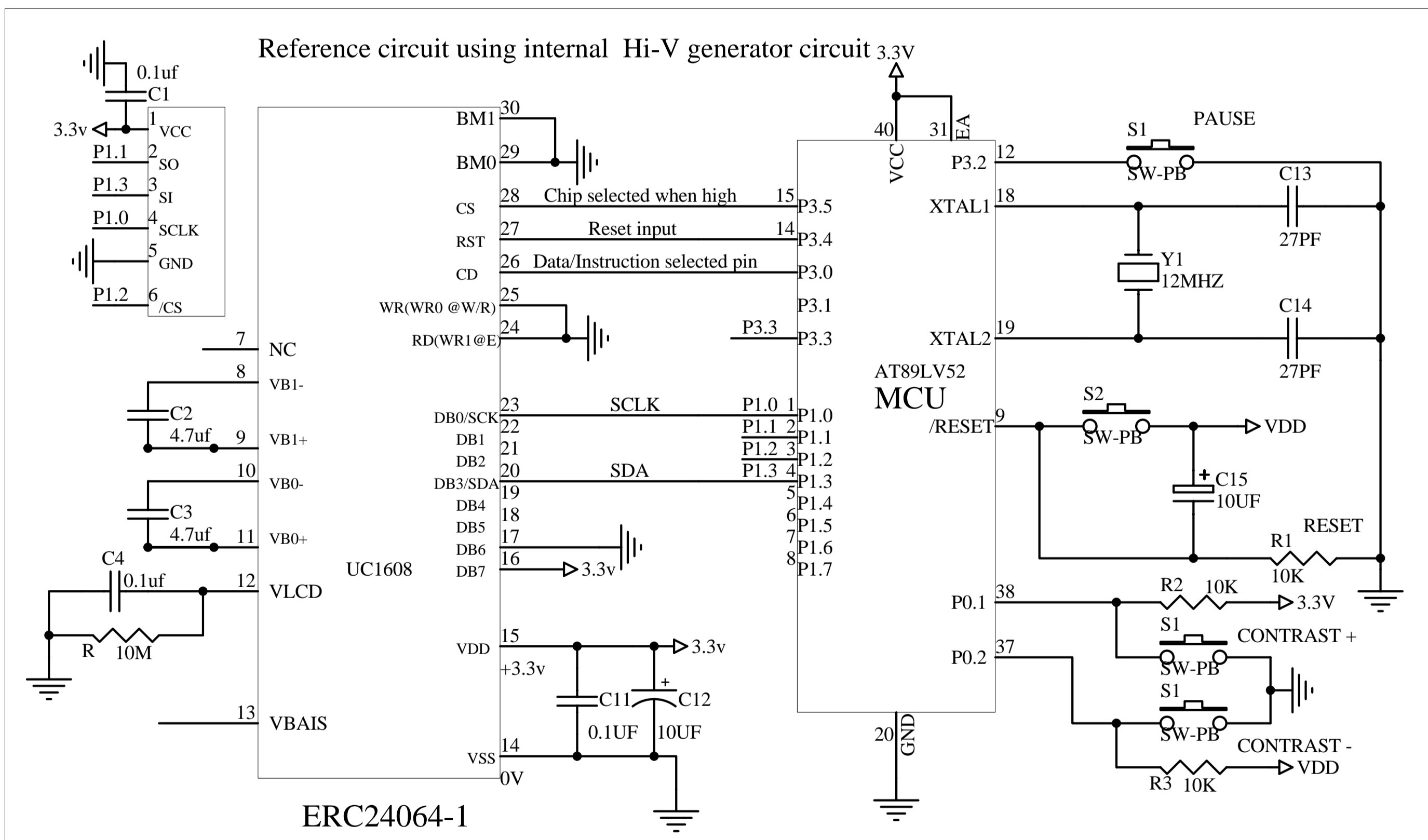
The Parallel (6800 8bit Series MCU)Reference Example

The Parallel (6800 4bit Series MCU)Reference Example



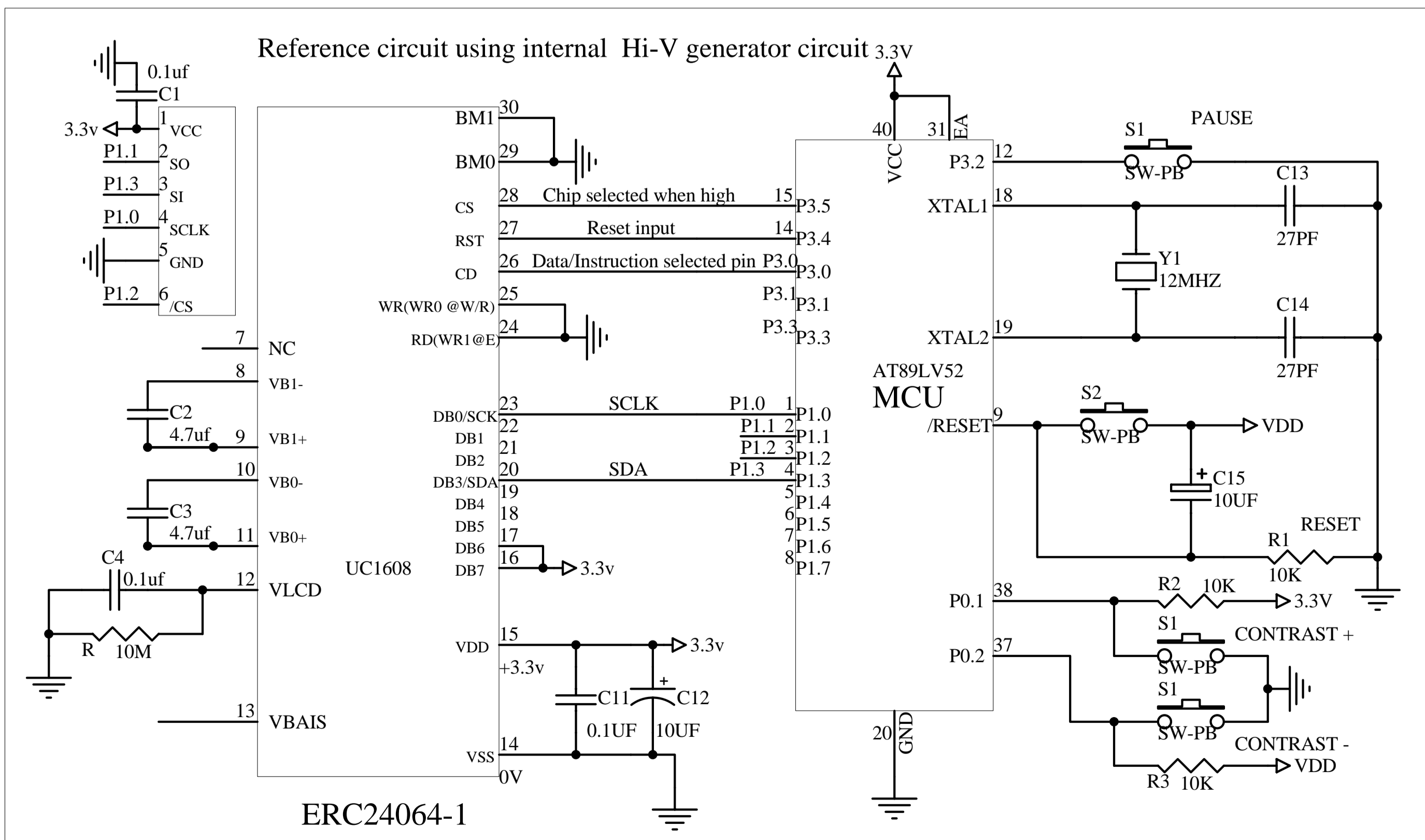
The Serial 4line SPI(S8) Reference Example

The Serial 3line SPI(S9) Reference Example

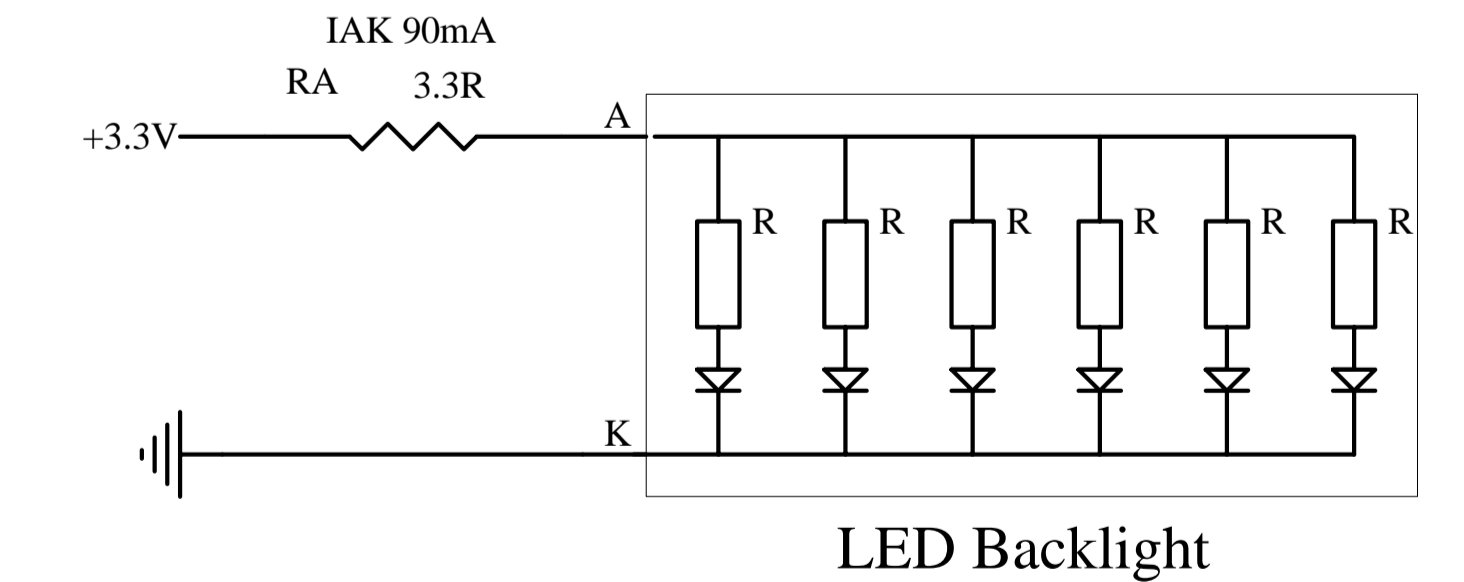
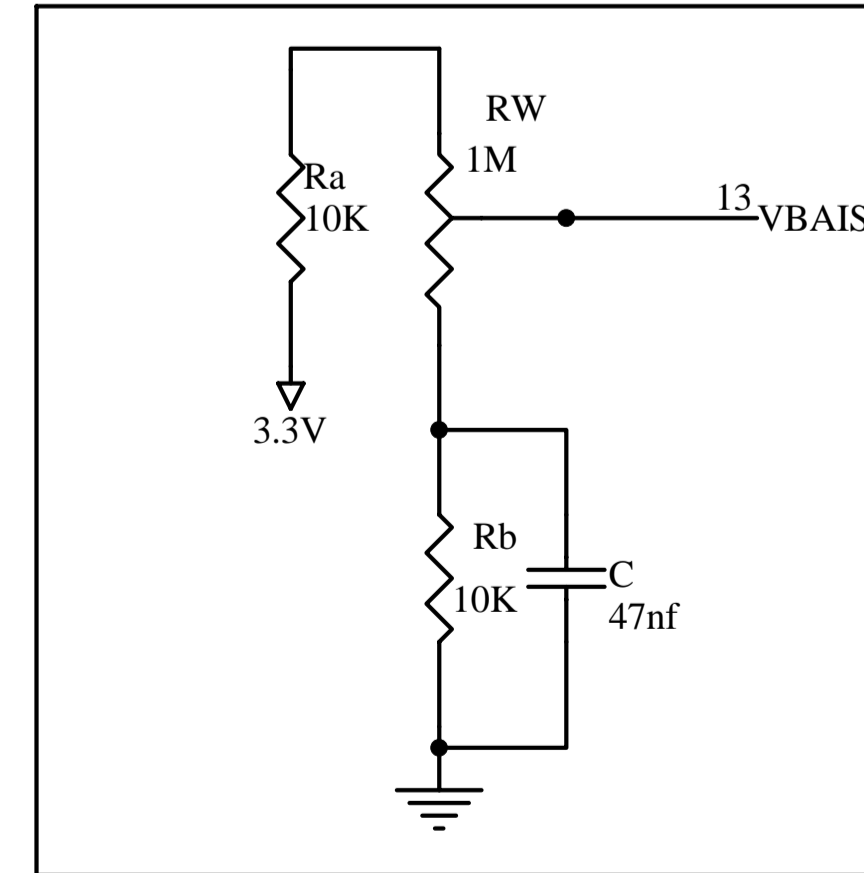


The Serial 3/4line SPI(S8UC) Reference Example

Reference circuit using external Bias source



Ra ,Rb is see instruction below



注:PIN 31 - PIN36为外部字符芯片的引脚,如果不使用字符芯片,这些脚需要悬空。
 字库内容可选(更换字库芯片)
 16*16 GB2321(6763)
 8*8 12*12 16*16 24*24 173国外文
 16*16 日文汉字(6763)
 Note: PIN 31 to PIN36 for external font chip pins, if do not use font chip, these pins need to keep open.
 Font optional (replace font chip)
 16 * 16 GB2321 (6763)
 Unicode (173 countries' language): 5x7 - 24x24
 (Latin, Greek, Cyrillic, Arabic, Hebrew, Thai)
 ISO8859 (14 sets): 5x7, 8x16
 ASCII (11 sets): 5x7 - 24x24
 LCM Character Set (8 sets): 5x7, 5x10
 16 * 16 Japanese characters(6763)

RST pin is optional. When RST pin is not used ,connect the pin to VDD

Title		EASTRISING TECHNOLOGY CO.,LTD.	
Size	Number	Revision	
A	ERC24064-1		A0
Date:	08-Apr-2011	Sheet of	1
File		Drawn By	Javen