

# ER-EPD075-3

## e-Paper Display Module Datasheet



## EastRising Technology Co., Limited

**Attention:**

- A. Some specifications of IC are not listed in this datasheet. Please refer to the IC datasheet for more details.
- B. The related documents for interfacing, demo code, IC datasheet are all available, please download from our web.
- C. Please pay more attention to "INSPECTION CRITERIA" in this datasheet. We assume you already agree with these criterions when you place an order with us. No more recommendations.

REV	Description	Release Date
1.0	Preliminary Release	Dec-22-2021

# CONTENTS

<b>1. ORDER INFORMATION</b>	04
1.1 Order Number	04
1.2 Image	04
<b>2. SPECIFICATION</b>	05
2.1 Display Specification	05
2.2 Mechanical Specification	05
2.3 Electrical Specification	05
2.4 Optical Specification	05
<b>3. OUTLINE DRAWING</b>	06
3.1 ER-EPD075-3 Outline Drawing	06
<b>4. ELECTRICAL SPEC</b>	07
4.1 Pin Configuration	07
4.2 Interface Selection	07
4.3 Absolute Maximum Ratings	08
4.4 Electrical Characteristics	09
<b>5. INSPECTION CRITERIA</b>	10
5.1 Acceptable Quality Level	10
5.2 Definition of Lot	10
5.3 Condition of Cosmetic Inspection	10
5.4 Module Cosmetic Criteria	11
5.5 Screen Cosmetic Criteria (Non-Operating)	12
5.6 Screen Cosmetic Criteria (Operating)	14
<b>6. PRECAUTIONS FOR USING</b>	16
6.1 Handling Precautions	16
6.2 Power Supply Precautions	16
6.3 Operating Precautions	17
6.4 Mechanical/Environmental Precautions	17
6.5 Storage Precautions	17
6.6 Others	17

<b>7.USING LCD MODULES</b>	18
7.1 Liquid Crystal Display Modules	18
7.2 Installing LCD Modules	18
7.3 Precaution for Handling LCD Modules	18
7.4 Electro-Static Discharge Control	19
7.5 Precaution for Soldering to EastRising LCM	19
7.6 Precaution for Operation	19
7.7 Limited Warranty	20
7.8 Return Policy	20
<b>8. IMAGE STICKING</b>	21
8.1 What is Image Sticking?	21
8.2 What causes Image Sticking and How to Avoid?	21
<b>9.STORAGE</b>	21

## 1. ORDERING INFORMATION

### 1.1 Order Number

Order Number	Description
ER-EPD075-3Y	7.5 inch E-Paper (E-ink) Display Yellow/White/Black Color
ER-EPD075-3R	7.5 inch E-Paper (E-ink) Display Red/White/Black Color
ER-EPD075-3-5070	7.5 inch E-Paper (E-ink) Display with Arduino Shield
ER-EPD075-3-5103	7.5 inch E-Paper (E-ink) Display with Raspberry Pi HAT

### 1.2 Image

ER-EPD075-3Y ↓



ER-EPD075-3R ↓



ER-EPD075-3Y-5070 ↓



ER-EPD075-3R-5070 ↓



ER-EPD075-3Y-5103 ↓



ER-EPD075-3R-5103 ↓



## 2. SPECIFICATION

### 2.1 Display Specification

Item	Standard Value			Unit
Display Format	800x480			Pixels
Display Connector	FPC			--
FPC Connector	24 Pin,0.5mm Pitch, SMD Horizontal Type Top contact			--
--	Operating Temperature	Storage Temperature	Humidity	Note2
ER-EPD075-3Y	0 ~ 30°C	0 ~ 40°C	45~70%	
ER-EPD075-3R	0 ~ 30°C	0 ~ 40°C	45~70%	
Sunlight Readable	Yes			--

Note 2-1 : Normal use is recommended to refresh every 24 hours.

Note 2-2 : Tttg is the transportation condition , the transport time is within 10 days for-25c-0c or 30C-60C.

Note 2-3 : When the three-color product is stored . The display screen should be kept white and face up . In addition , please besure to refresh the e-paper every three months

### 2.2 Mechanical Specification

Item	Standard Value	Unit
Screen Size	7.5	inch
Outline Dimension with FPC Folded	170.20(W)x111.20(H)x1.15(T)	mm
Active Area	163.20(W) x97.92(H)	mm
Pixel Pitch	0.204X0.204	mm

### 2.3 Electrical Specification

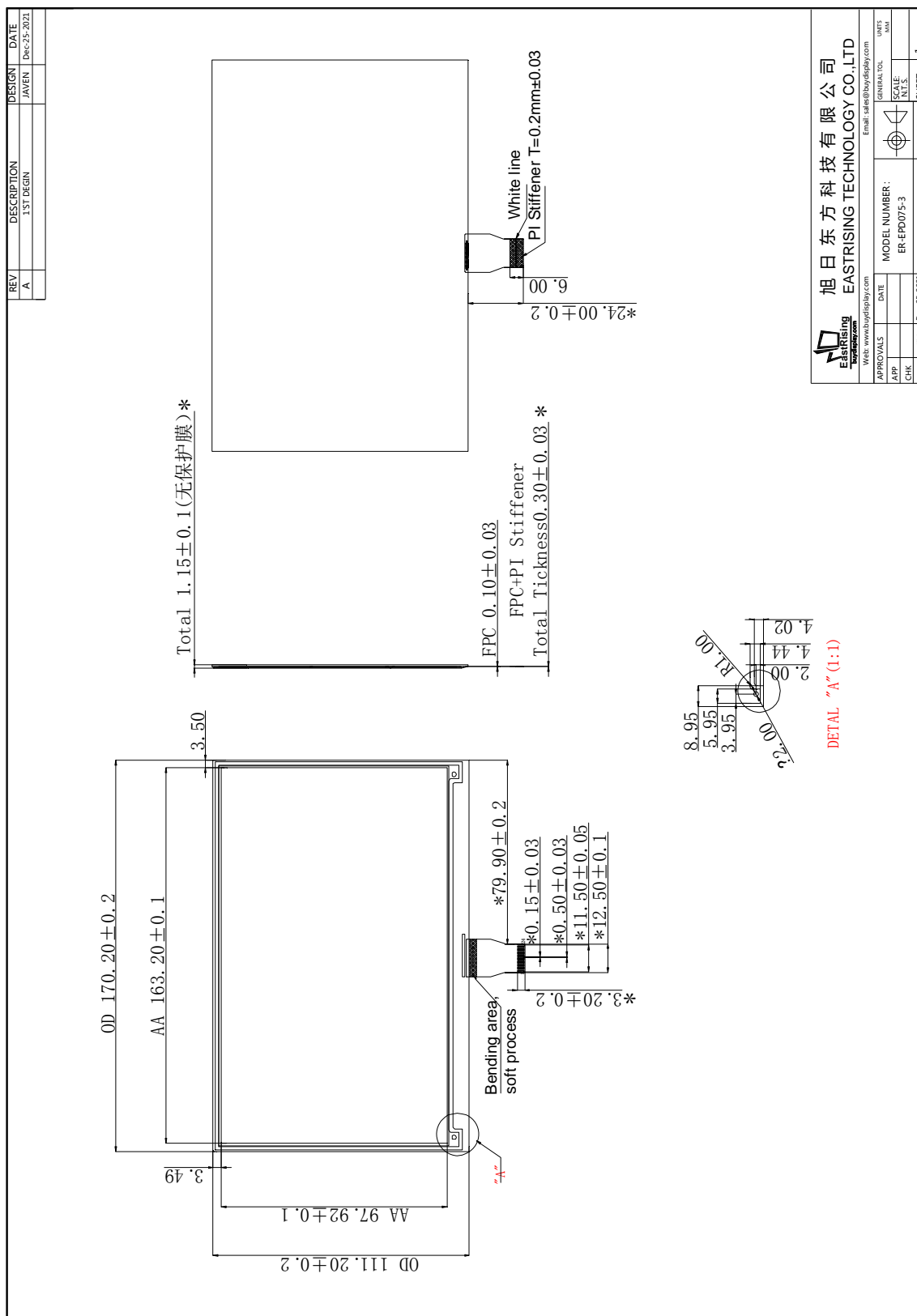
Item	Standard Value	Unit
IC Package	COG	--
Controller	UC8179	--
Interface	3/4 Wire SPI	--

### 2.4 Optical Specification

Item	Standard Value	Unit
LCD Type	E-Ink Display (E-Paper Display)	--
Viewing Angle Range	Left:85 , Right:85 , Up:85 , Down:85	deg

### 3. OUTLINE DRAWING

#### 3.1 ER-EPD075-3 Outline Drawing



## 4. ELECTRICAL SPEC

### 4.1 Pin Configuration

Pin No	Pin Name	Descriptions	Remark
1	NC	No connection and do not connect with other NC pinss	Keep Open
2	GDR	This pin is N-MOS gate control	
3	RESE	Current Sense Input for the Control Loop	
4	NC	No connection and do not connect with other NC pins	
5	VSHR	Positive source voltage for Red	
6	TSCL	I2C clock for external temperature sensor	
7	TSDA	I2C clock for external temperature sensor	
8	BS	Input interface setting. Select 3 wire/ 4 wire SPI interface	Note 4-5
9	BUSY_N	This pin indicates the driver status	Note 4-4
10	RST_N	Global reset pin. Low reset	Note 4-3
11	DC	Serial communication Command/Data input	Note 4-2
12	(CSB)CS-N	Serial communication chip select	Note 4-1
13	(SCL)CLK	serial clock pin (SPI)	
14	(SDA)DATA	serial data pin (SPI)	
15	VDDIO	Power for interface logic pins	
16	VDDA(VDD)	Power Supply pin for the chip	
17	VSS	Digital ground	
18	VDDD	Core logic power pin	
19	(FMSDO)VPP	OTP program power	
20	VSH	Positive Source driving voltage	
21	VGH	Positive Gate driving voltage	
22	VSL	Negative Source driving voltage	
23	VGL	Negative Gate voltage.	
24	VCOM	VCOM driving voltage	

Note 4-1: This pin (CSB) is the chip select input connecting to the MCU. The chip is enabled for MCU communication only when CSB is pulled Low.

Note 4-2: This pin (DC) is Data/Command control pin connecting to the MCU. When the pin is pulled HIGH, the data will be interpreted as data. When the pin is pulled Low, the data will be interpreted as command.

Note 4-3: This pin (RST\_N) is reset signal input. The Reset is active Low

Note 4-4: This pin (BUSY\_N) is BUSY\_N state output pin. When BUSY\_N is low, the operation of chip should not be interrupted and any commands should not be issued to the module. The driver IC will put BUSY\_N pin low when the driver IC is working such as:

- Outputting display waveform; or
- Programming with OTP
- Communicating with digital temperature sensor

Note 4-5: This pin (BS) is for 3-line SPI or 4-line SPI selection. When it is "Low", 4-line SPI is selected. When it is "High", 3-line SPI (9 bits

SPI) is selected. Please refer to below Table.

#### 4.2 Interface Selection

BS	Interface
L	4-wire Serial Interface.
H	3-wire Serial Interface.- 9 bits SPI

#### 4.3 Absolute Maximum Ratings

Item	Symbol	Min.	Typ.	Max.	Unit
Logic Supply Voltage	VCI, VDDIO	-0.5	-	+6.0	V
Logic Input Voltage	VIN	-0.3	-	VDDIO +0.3.	V



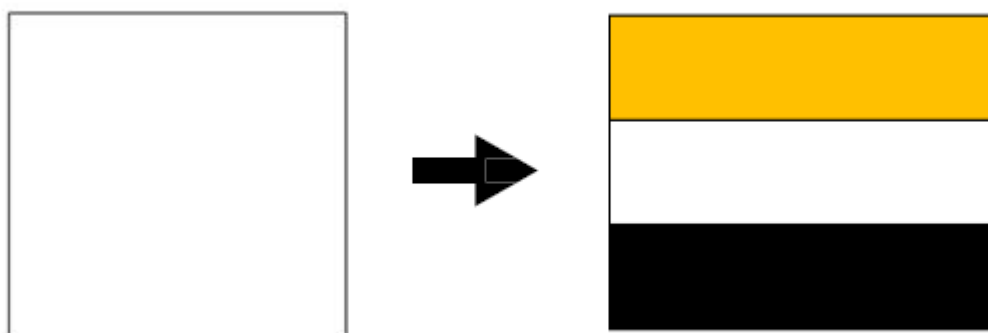
#### 4.4 Electrical Characteristics

Item	Symbol	Condition	Min.	Typ.	Max.	Unit
VCI Operation Voltage Logic Input Voltage	VCI VDDIO	VCI VDDIO	2.5	3.3	3.6	V
Input Voltage'H'Level	VIH	Digital input pins	0.7VDDIO	-	VDDIO	V
Input Voltage'L'Level	VIL		0	-	0.3VDDIO	V
Output Voltage'H'Level	VOH	IOH=400UA	VDDIO-0.4	-	-	V
Output Voltage'L'Level	VOL	IOL=-400UA	0	-	0.4	V
Image Update Current	I UPDATE		-	11	--	mA
Standby Panel Current	I STANDBY	VDD=3.3V	-	3	--	uA

The Typical power consumption is measured using associated 25°C waveform with following pattern transition: from horizontal scan pattern to vertical scan pattern

The listed electrical/optical characteristics are only guaranteed under controller & waveform provided by Xing tai  
Vcom value will be OTP before in factory or present on the label sticker

**The Typical power consumption**



## 5. INSPECTION CRITERIA

### 5.1 Acceptable Quality Level

Each lot should satisfy the quality level defined as follows

Partition	AQL	Definition
A. Major	0.4%	Functional defective as product
B. Minor	1.5%	Satisfy all functions as product but not satisfy cosmetic standard

### 5.2 Definition of Lot

One lot means the delivery quantity to customer at one time.

### 5.3 Condition of Cosmetic Inspection

#### ◆ INSPECTION AND TEST

-FUNCTION TEST

-APPEARANCE INSPECTION

-PACKING SPECIFICATION

#### ◆ INSPECTION CONDITION

- Put under the lamp (20W) at a distance 100mm from

- Tilt upright 45 degree by the front (back) to inspect LCD appearance.

#### ◆ AQL INSPECTION LEVEL

- SAMPLING METHOD: MIL-STD-105D

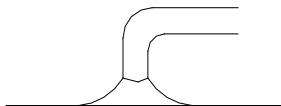
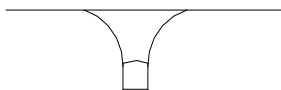
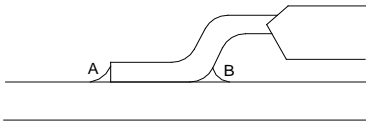
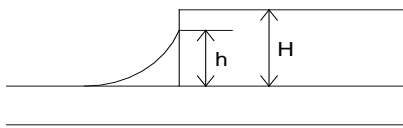
- SAMPLING PLAN: SINGLE

- MAJOR DEFECT: 0.4% (MAJOR)

- MINOR DEFECT: 1.5% (MINOR)

- GENERAL LEVEL: II/NORMAL

5.4 Module Cosmetic Criteria

No.	Item	Judgment Criterion	Partition
1	Difference in Spec.	None allowed	Major
2	Pattern Peeling	No substrate pattern peeling and floating	Major
3	Soldering Defects	No soldering missing	Major
		No soldering bridge	Major
		No cold soldering	Minor
4	Resist Flaw on Substrate	Invisible copper foil( $\phi$ 0.5mm or more)on substrate pattern	Minor
5	Accretion of Metallic Foreign Matter	No soldering dust	Minor
		No accretion of metallic foreign matters(Not exceed $\phi$ 0.2mm)	
6	Stain	No stain to spoil cosmetic badly	Minor
7	Plate Discoloring	No plate fading, rusting and discoloring	Minor
8	Solder Amount 1.Lead Parts	a. Soldering side of PCB Solder to form a 'Filet' all around t Solder should not hide the lead form  b.Components side (In case of 'Through Hole PCB' ) Solder to reach the Components side of PCB 	Minor
	2.Flat Packages	Either 'toe' (A) or 'heel' (B) of the lead to be covered by Filet  Lead form to be assume over solder.	Minor
	3.Chips	$(3/2) H \geq h \geq (1/2)H$ 	Minor

9	Backlight Defects	1.Light fails or flickers.(Major) 2. Color and luminance do not correspond to specifications. (Major) 3.Exceeds standards for display' s blemishes, foreign matter, dark lines or scratches.(Minor)	See list ←
10	PCB Defects	Oxidation or contamination on connectors.* 2. Wrong parts, missing parts, or parts not in specification.* 3.Jumpers set incorrectly.(Minor) 4.Solder(if any)on bezel, LED pad, zebra pad, or screw hole pad is not smooth.(Minor) *Minor if display functions correctly. Major if the display fails.	See list ←
11	Soldering Defects	1. Unmelted solder paste. 2. Cold solder joints, missing solder connections, or oxidation.* 3. Solder bridges causing short circuits.* 4. Residue or solder balls. 5. Solder flux is black or brown. *Minor if display functions correctly. Major if the display fails.	Minor

5.5 Screen Cosmetic Criteria (Non-Operating)

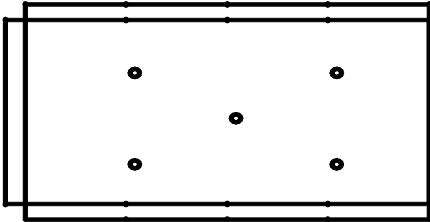
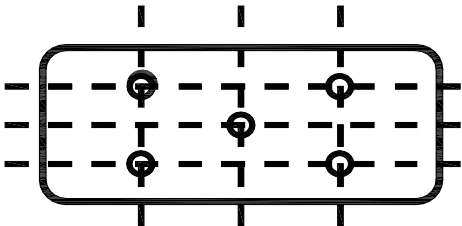
No.	Defect	Judgment Criterion	Partition
1	Spots	In accordance with Screen Cosmetic Criteria (Operating) No.1.	Minor
2	Lines	In accordance with Screen Cosmetic Criteria (Operation) No.2.	Minor
3	Bubbles in Polarizer		Minor
		Size: d mm	
		Acceptable Qty in active area	
		d $\leq$ 0.3	
		Disregard	
		0.3 < d $\leq$ 1.0	3
		1.0 < d $\leq$ 1.5	1
		1.5 < d	0
4	Scratch	In accordance with spots and lines operating cosmetic criteria, When the light reflects on the panel surface, the scratches are not to be remarkable.	Minor
5	Allowable density	Above defects should be separated more than 30mm each other.	Minor
6	Coloration	Not to be noticeable coloration in the viewing area of the LCD panels. Back-lit type should be judged with back-lit on state only.	Minor
7	Contamination	Not to be noticeable.	Minor

5.6 Screen Cosmetic Criteria (Operating)

No.	Defect	Judgment Criterion	Partition	
1	Spots	A) Clear	Minor	
		Size:d mm		Acceptable Qty in active area
		d≤0.1		Disregard
		0.1<d≤0.2		6
		0.2<d≤0.3		2
		0.3<d		0
Note: Including pin holes and defective dots which must be within one pixel Size. Unclear				
Size:d mm	Acceptable Qty in active area			
d≤0.2	Disregard			
0.2<d≤0.5	6			
0.5<d≤0.7	2			
0.7<d	0			
2	Lines	A) Clear	Minor	
		<div><div>L 5.0</div><div>2.0</div><div>∞</div><div>0.02</div><div>0.05</div><div>0.1</div><div>W</div><div>(0)</div><div>(6)</div><div>See No.1</div></div> <div>Note: () – Acceptable Qty in active area L - Length (mm) W -Width(mm) ∞-Disregard</div> <div>B) Unclear</div> <div><div>L 10.0</div><div>2.0</div><div>∞</div><div>0.05</div><div>0.3</div><div>0.5</div><div>W</div><div>(0)</div><div>(6)</div><div>See No.1</div></div>		

Clear’ = The shade and size are not changed by Vo.

Unclear’ = The shade and size are changed by Vo.

No.	Defect	Judgment Criterion	Partition
3	Rubbing line	Not to be noticeable.	Minor
4	Allowable density	Above defects should be separated more than 10mm each other.	Minor
5	Rainbow	Not to be noticeable.	Minor
6	Dot size	To be 95%~105%of the dot size (Typ.) in drawing. Partial defects of each dot (ex.pin-hole) should be treated as spot. (see Screen Cosmetic Criteria (Operating) No.1)	Minor
7	Brightness (only back-lit Module)	Brightness Uniformity must be $B_{MAX}/B_{MIN} \leq 2$ - $B_{MAX}$ : Max.value by measure in 5 points - $B_{MIN}$ : Min.value by measure in 5 points Divide active area into 4 vertically and horizontally. Measure 5 points shown in the following figure. 	Minor
8	Contrast Uniformity	Contrast Uniformity must be $B_{mMAX}/B_{mMIN} \leq 2$ Measure 5 points shown in the following figure. Dashed lines divide active area into 4 vertically and horizontally. Measuring points are located at the inter-sections of dashed line.   Note: $B_{MAX}$ – Max.value by measure in 5 points. $B_{MIN}$ – Min.value by measure in 5 points. O – Measuring points in $\phi 10mm$ .	Minor
<p>Note:</p> <p>(1) Size: <math>d = (\text{long length} + \text{short length})/2</math></p> <p>(2) The limit samples for each item have priority.</p> <p>(3) Complexed defects are defined item by item, but if the number of defects is defined in above table, the total number should not exceed 10.</p> <p>(4) In case of 'concentration' , even the spots or the lines of 'disregarded' size should not be allowed. Following three situations should be treated as 'concentration' .</p> <ul style="list-style-type: none"> <li>-7 or over defects in circle of <math>\phi 5mm</math>.</li> <li>-10 or over defects in circle of <math>\phi 10mm</math></li> <li>-20 or over defects in circle of <math>\phi 20mm</math></li> </ul>			

## **6. PRECAUTIONS FOR USING**

### **6.1 Handling Precautions**

- ◆ This device is susceptible to Electro-Static Discharge (ESD) damage. Observe Anti-Static precautions.
- ◆ EastRising display panel is made of glass. Do not subject it to a mechanical shock by dropping it or impact.
- ◆ If EastRising display panel is damaged and the liquid crystal substance leaks out, be sure not to get any in your mouth. If the substance contacts your skin or clothes, wash it off using soap and water.
- ◆ Do not apply excessive force to the EastRising display surface or the adjoining areas since this may cause the color tone to vary.
- ◆ The polarizer covering the EastRising display surface of the LCD module is soft and easily scratched. Handle this polarizer carefully.
- ◆ If EastRising display surface becomes contaminated, breathe on the surface and gently wipe it with a soft dry cloth. If it is heavily contaminated, moisten cloth with one of the following Isopropyl or alcohol.
- ◆ Solvents other than those above-mentioned may damage the polarizer. Especially, do not use the Water.
- ◆ Exercise care to minimize corrosion of the electrode. Corrosion of the electrodes is accelerated by water droplets, moisture condensation or a current flow in a high-humidity environment.
- ◆ Install the EastRising LCD Module by using the mounting holes. When mounting the LCD module make sure it is free of twisting, warping and distortion. In particular, do not forcibly pull or bend the cable or the backlight cable.
- ◆ Do not attempt to disassemble or process EastRising LCD module.
- ◆ NC terminal should be open. Do not connect anything.
- ◆ If the logic circuit power is off, do not apply the input signals.
- ◆ To prevent destruction of the elements by static electricity, be careful to maintain an optimum work environment.
  - Be sure to ground the body when handling EastRising LCD modules.
  - Tools required for assembling, such as soldering irons, must be properly grounded.
  - To reduce the amount of static electricity generated, do not conduct assembling and other work under dry conditions.
  - The LCD module is coated with a film to protect the display surface. Exercise care when peeling off this protective film since static electricity may be generated.

### **6.2 Power Supply Precautions**

- ◆ Identify and, at all times, observe absolute maximum ratings for both logic and LC drivers. Note that there is some variance between models.
- ◆ Prevent the application of reverse polarity to VDD and VSS, however briefly.
- ◆ Use a clean power source free from transients. Power-up conditions are occasionally jolting and may exceed the maximum ratings of EastRising modules.
- ◆ The VDD power of EastRising module should also supply the power to all devices that may access the display. Don't allow the data bus to be driven when the logic supply to the module is turned off.



### 6.3 Operating Precautions

- ♦ DO NOT plug or unplug EastRising module when the system is powered up.
- ♦ Minimize the cable length between EastRising module and host MPU.
- ♦ For models with backlights, do not disable the backlight by interrupting the HV line. Unload inverters produce voltage extremes that may arc within a cable or at the display.
- ♦ Operate EastRising module within the limits of the modules temperature specifications.

### 6.4 Mechanical/Environmental Precautions

- ♦ Improper soldering is the major cause of module difficulty. Use of flux cleaner is not recommended as they may seep under the electrometric connection and cause display failure.
- ♦ Mount EastRising module so that it is free from torque and mechanical stress.
- ♦ Surface of the LCD panel should not be touched or scratched. The display front surface is an easily scratched, plastic polarizer. Avoid contact and clean only when necessary with soft, absorbent cotton dampened with petroleum benzene.
- ♦ Always employ anti-static procedure while handling EastRising module.
- ♦ Prevent moisture build-up upon the module and observe the environmental constraints for storage tem
- ♦ Do not store in direct sunlight
- ♦ If leakage of the liquid crystal material should occur, avoid contact with this material, particularly ingestion. If the body or clothing becomes contaminated by the liquid crystal material, wash thoroughly with water and soap.

### 6.5 Storage Precautions

When storing the LCD modules, avoid exposure to direct sunlight or to the light of fluorescent lamps.

Keep EastRising modules in bags (avoid high temperature / high humidity and low temperatures below 0 °C).

Whenever possible, EastRising LCD modules should be stored in the same conditions in which they were shipped from our company.

### 6.6 Others

Liquid crystals solidify under low temperature (below the storage temperature range) leading to defective orientation or the generation of air bubbles (black or white). Air bubbles may also be generated if the module is subject to a low temperature. If EastRising LCD modules have been operating for a long time showing the same display patterns, the display patterns may remain on the screen as ghost images and a slight contrast irregularity may also appear. A normal operating status can be regained by suspending use for some time. It should be noted that this phenomenon does not adversely affect performance reliability.

To minimize the performance degradation of the LCD modules resulting from destruction caused by static electricity etc., exercise care to avoid holding the following sections when handling the modules.

- Exposed area of the printed circuit board.
- Terminal electrode sections.

## 7. USING LCD MODULES

### 7.1 Liquid Crystal Display Modules

EastRising LCD is composed of glass and polarizer. Pay attention to the following items when handling.

- ◆ Please keep the temperature within specified range for use and storage. Polarization degradation, bubble generation or polarizer peel-off may occur with high temperature and high humidity.
- ◆ Do not touch, push or rub the exposed polarizers with anything harder than an HB pencil lead (glass, tweezers, etc.).
- ◆ N-hexane is recommended for cleaning the adhesives used to attach front/rear polarizers and reflectors made of organic substances which will be damaged by chemicals such as acetone, toluene, ethanol and isopropyl alcohol.
- ◆ When EastRising display surface becomes dusty, wipe gently with absorbent cotton or other soft material like chamois soaked in petroleum benzin. Do not scrub hard to avoid damaging the display surface.
- ◆ Wipe off saliva or water drops immediately, contact with water over a long period of time may cause deformation or color fading.
- ◆ Avoid contacting oil and fats.
- ◆ Condensation on the surface and contact with terminals due to cold will damage, stain or dirty the polarizers. After products are tested at low temperature they must be warmed up in a container before coming in contact with room temperature air.
- ◆ Do not put or attach anything on EastRising display area to avoid leaving marks on.
- ◆ Do not touch the display with bare hands. This will stain the display area and degrade insulation between terminals (some cosmetics are determined to the polarizers).
- ◆ As glass is fragile. It tends to become chipped during handling especially on the edges. Please avoid dropping.

### 7.2 Installing LCD Modules

- ◆ Cover the surface with a transparent protective plate to protect the polarizer and LC cell.
- ◆ When assembling the LCM into other equipment, the spacer to the bit between the LCM and the fitting plate should have enough height to avoid causing stress to the module surface, refer to the individual specifications for measurements. The measurement tolerance should be  $\pm 0.1\text{mm}$ .

### 7.3 Precaution for Handling LCD Modules

Since EastRising LCM has been assembled and adjusted with a high degree of precision; avoid applying excessive shocks to the module or making any alterations or modifications to it.

- ◆ Do not alter, modify or change the shape of the tab on the metal frame.
- ◆ Do not make extra holes on the printed circuit board, modify its shape or change the positions of components to be attached.
- ◆ Do not damage or modify the pattern writing on the printed circuit board.
- ◆ Absolutely do not modify the zebra rubber strip (conductive rubber) or heat seal connector.
- ◆ Except for soldering the interface, do not make any alterations or modifications with a soldering iron.
- ◆ Do not drop, bend or twist EastRising LCM.

#### 7.4 Electro-Static Discharge Control

Since this module uses a CMOS LSI, the same careful attention should be paid to electrostatic discharge as for an ordinary CMOS IC.

- ◆ Make certain that you are grounded when handling LCM.
- ◆ Before remove LCM from its packing case or incorporating it into a set, be sure the module and your body have the same electric potential.
- ◆ When soldering the terminal of LCM, make certain the AC power source for the soldering iron does not leak.
- ◆ When using an electric screwdriver to attach LCM, the screwdriver should be of ground potentiality to minimize as much as possible any transmission of electromagnetic waves produced sparks coming from the commutator of the motor.
- ◆ As far as possible make the electric potential of your work clothes and that of the work bench the ground potential.
- ◆ To reduce the generation of static electricity be careful that the air in the work is not too dried. A relative humidity of 50%-60% is recommended.

#### 7.5 Precaution for Soldering to EastRising LCM

- ◆ Observe the following when soldering lead wire, connector cable and etc. to the LCM.
  - Soldering iron temperature :  $280^{\circ}\text{C} \pm 10^{\circ}\text{C}$
  - Soldering time: 3-4 sec.
  - Solder: eutectic solder.

If soldering flux is used, be sure to remove any remaining flux after finishing to soldering operation. (This does not apply in the case of a non-halogen type of flux.) It is recommended that you protect the LCD surface with a cover during soldering to prevent any damage due to flux spatters.

- ◆ When soldering the electroluminescent panel and PC board, the panel and board should not be detached more than three times. This maximum number is determined by the temperature and time conditions mentioned above, though there may be some variance depending on the temperature of the soldering iron.
- ◆ When remove the electroluminescent panel from the PC board, be sure the solder has completely melted, the soldered pad on the PCs board could be damaged.

#### 7.6 Precaution for Operation

- ◆ Driving the EastRising LCD in the voltage above the limit shortens its life.
- ◆ Response time is greatly delayed at temperature below the operating temperature range. However, this does not mean the LCD will be out of the order. It will recover when it returns to the specified temperature range.
- ◆ If EastRising display area is pushed hard during operation, the display will become abnormal. However, it will return to normal if it is turned off and then back on.
- ◆ Condensation on terminals can cause an electrochemical reaction disrupting the terminal circuit. Therefore, it must be used under the relative condition of  $40^{\circ}\text{C}$ , 50% RH.
- ◆ When turning the power on, input each signal after the positive/negative voltage becomes stable.

### 7.7 Limited Warranty

Unless agreed between EastRising and customer, EastRising will replace or repair any of its LCD modules which are found to be functionally defective when inspected in accordance with EastRising LCD acceptance standards (copies available upon request) for a period of one year from date of shipments. Cosmetic/visual defects must be returned to EastRising within 90 days of shipment. Confirmation of such date shall be based on freight documents. The warranty liability of EastRising limited to repair and/or replacement on the terms set forth above. EastRising will not be responsible for any subsequent or consequential events.

### 7.8 Return Policy

No warranty can be granted if the precautions stated above have been disregarded. The typical examples of violations are:

- Broken LCD glass.
- PCB eyelet damaged or modified.
- PCB conductors damaged.
- Circuit modified in any way, including addition of components.
- PCB tampered with by grinding, engraving or painting varnish.
- Soldering to or modifying the bezel in any manner.

Module repairs will be invoiced to the customer upon mutual agreement. Modules must be returned with sufficient description of the failures or defects. Any connectors or cable installed by the customer must be removed completely without damaging the PCB eyelet's, conductors and terminals.

## 8. IMAGE STICKING

### 8.1 What is Image Sticking?

If you remain a fixed image on LCD Display for a long period of time, you may experience a phenomenon called Image Sticking. Image Sticking - sometimes also called "image retention" or "ghosting" - is a phenomenon where a faint outline of a previously displayed image remains visible on the screen when the image is changed. It can occur at variable levels of intensity depending on the specific image makeup, as well as the amount of time the core image elements are allowed to remain unchanged on the screen.

### 8.2 What Causes Image Sticking and How to Avoid?

1. The e-Paper display cannot be powered on for a long time, you must set e-Paper display to sleep mode or power off when it needn't refresh ,otherwise e-Paper keeps in high voltage status for long time which will damage e-Paper and cannot be fixed. We suggest customers to update e-Paper display every 24 hours or at least 10 days to update again. Otherwise, ghost of the last content may cannot be cleared.

It is also recommended that customer ships or stores the e-Paper display with completely white image to avoid image sticking issue and refresh

2. Three-color e-Paper display is normal to be a little "color" . You can refresh it to white to keep it upward for storage.

3. The e-Paper display ignores the data sent when it is in sleep mode, you need to initialize it for properly refreshing. The e-Paper display cannot refresh directly under sunlight. The refresh steps should be done indoor.

4. For those e-Paper displays which support partial refresh, you cannot use partial refresh all the time. A full refresh should be done to clear screen after several times (partial refresh), otherwise, e-Paper display will be damaged and cannot fixed.

## 9. STORAGE

We recommend customers to refresh three-color e-Paper displays one by one if storage period is more than half a year, otherwise the image on display may be unclear as below image shows.

